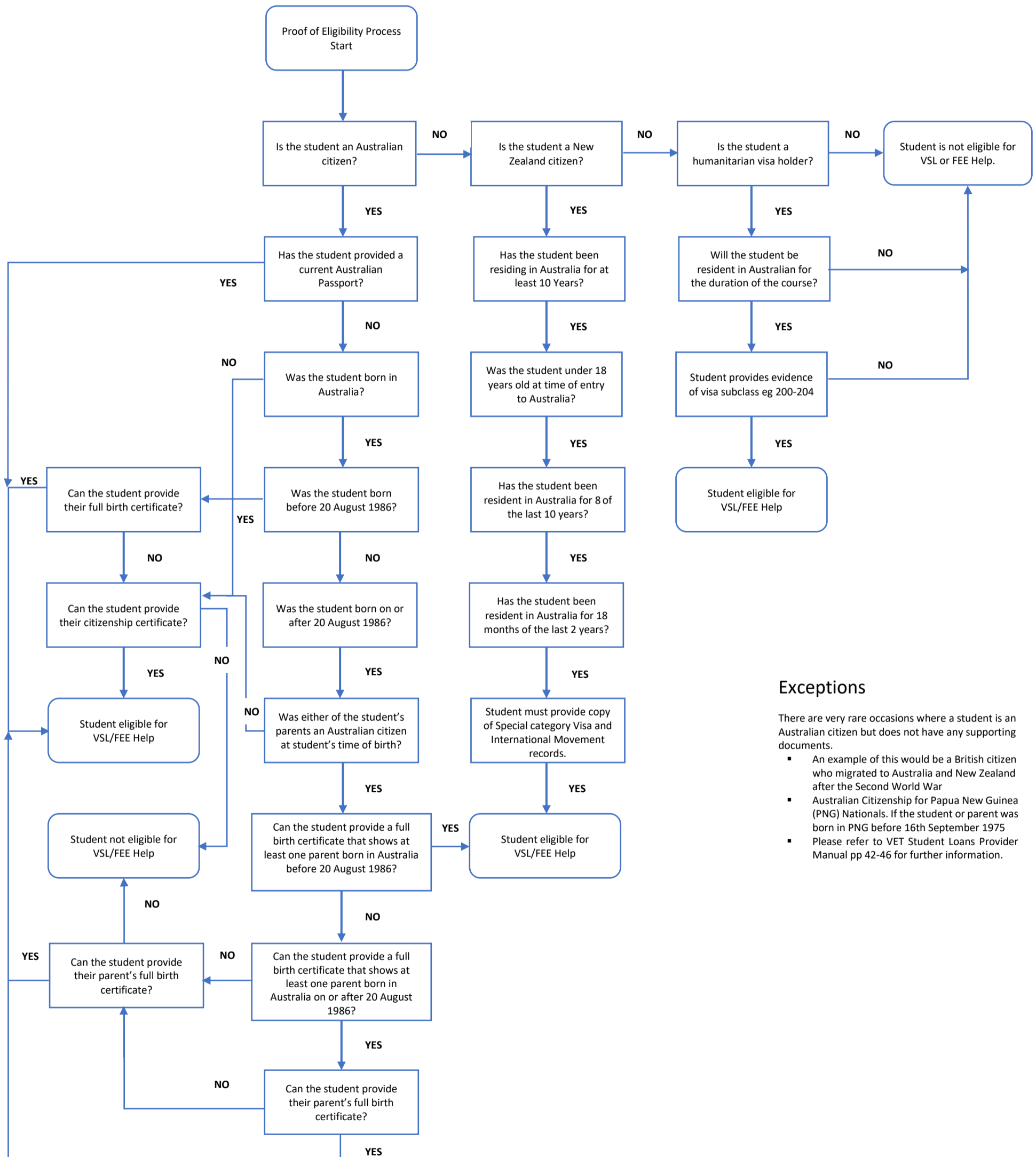


# VSL/FEE HELP STUDENT ELIGIBILITY FLOWCHART



## Exceptions

There are very rare occasions where a student is an Australian citizen but does not have any supporting documents.

- An example of this would be a British citizen who migrated to Australia and New Zealand after the Second World War
- Australian Citizenship for Papua New Guinea (PNG) Nationals. If the student or parent was born in PNG before 16th September 1975
- Please refer to VET Student Loans Provider Manual pp 42-46 for further information.